

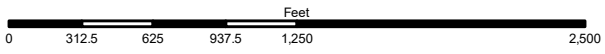
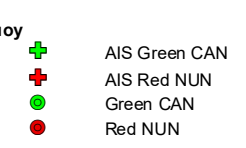
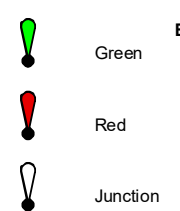
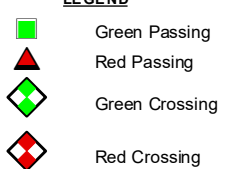
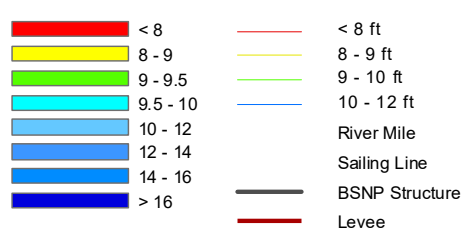
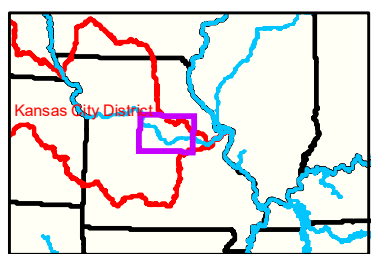


Notes

Jefferson City
Gage = 6.6 at
time of collection
13 November 2020

Jefferson City Gage = 6.6 at time of collection 13 November 2020

Gage_L



NOTES:
Horizontal Coordinate System:
World Geodetic System of 1984 (WGS84), projected to the
Universal Transverse Mercator (UTM) Zone 15 North.
Distance units in U.S. Survey Feet

Vertical Datum:
Soundings are shown in feet and indicated depths
are referenced to water surface at time of collection.

The information depicted on this map represents the results of a survey
conducted on the date indicated and can only be considered
to represent the general condition existing at that time.

The location of navigation aids are based on and provided by
the U.S. Coast Guard.

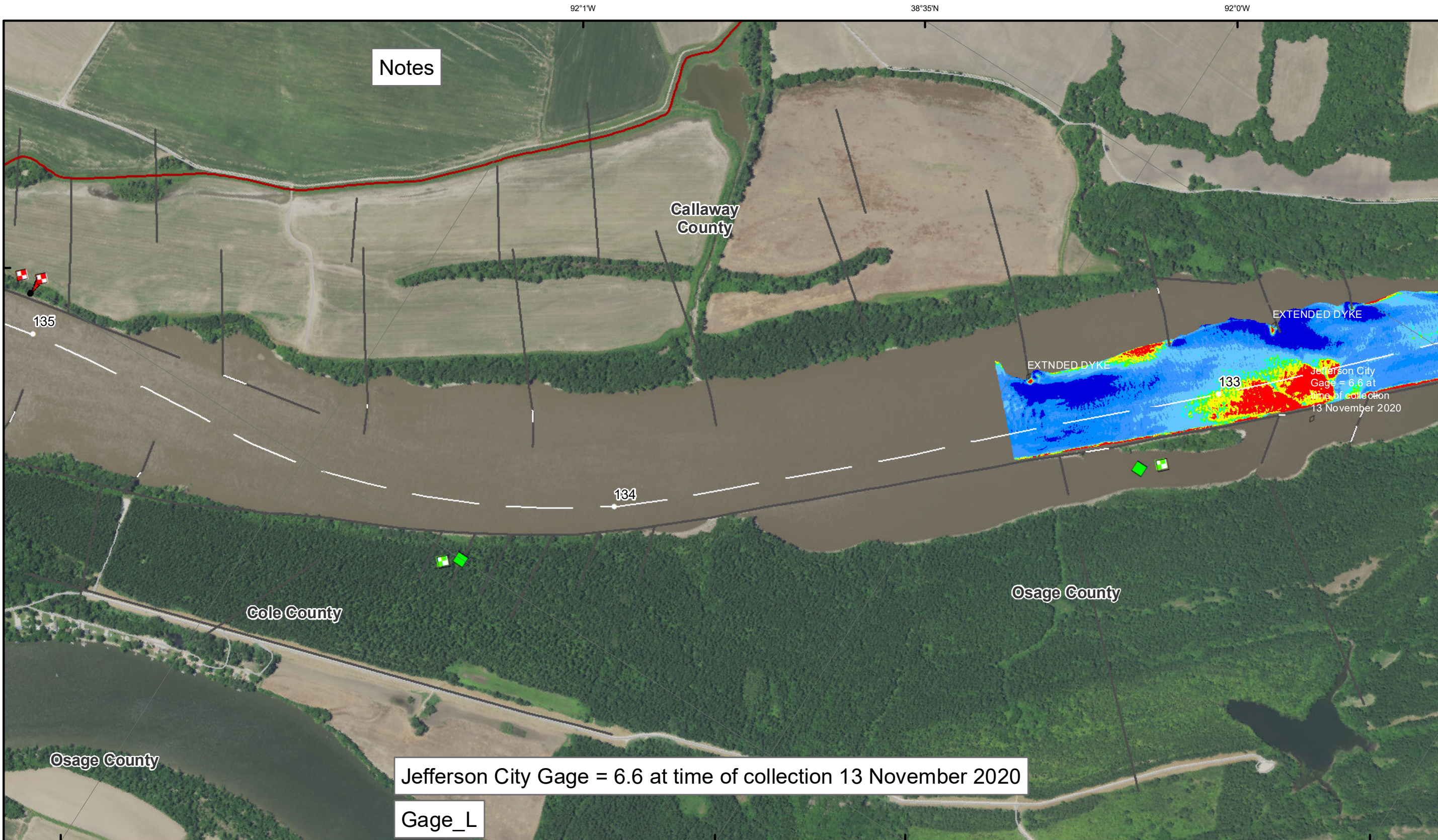


DISCLAIMER: The U.S. Army Corps of Engineers (USACE) provides this information as a service to the public. It is not intended to be used for any purpose other than that for which it was intended. The USACE makes no warranty, express or implied, regarding the accuracy, reliability, or completeness of the information. The USACE is not responsible for any errors or omissions in this information. The user assumes all liability for any use of this information. The USACE is not responsible for any damage or injury resulting from the use of this information. The USACE is not responsible for any loss of data or information resulting from the use of this information. The USACE is not responsible for any loss of data or information resulting from the use of this information. The USACE is not responsible for any loss of data or information resulting from the use of this information.

KANSAS CITY DISTRICT MISSOURI RIVER AREA OFFICE	
Submitted By:	MIRAO
Reviewed By:	MIRAO
Checked By:	MIRAO

Survey Information
MO_02_LMR
MO_02_LMRX_20201113_CS_132_4_133_3_SORT
13 November 2020

**Sheet
Number
15 of 46**



Notes

Jefferson City Gage = 6.6 at time of collection 13 November 2020

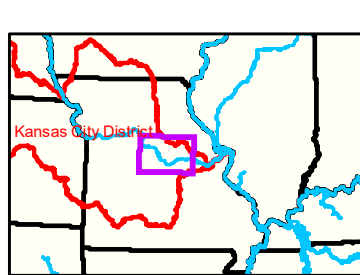
Gage_L



DISCLAIMER: The U.S. Army Corps of Engineers (USACE) provides this information for informational purposes only. It is not intended for use in any legal proceeding. The USACE makes no warranty, express or implied, regarding the accuracy, reliability, or completeness of the information provided. The user assumes all liability for any use of the information provided. The USACE is not responsible for any damage or loss resulting from the use of this information. The USACE is not a contractor for any work shown on this map. The location of navigation aids are based on and provided by the U.S. Coast Guard.

KANSAS CITY DISTRICT MISSOURI RIVER AREA OFFICE	
Submitted By:	MRAO
Reviewed By:	MRAO
Checked By:	MRAO

Survey Information
MO_02_LMR
MO_02_LMRX_20201113_CS_132_4_133_3_SORT
13 November 2020



LEGEND

	< 8		< 8 ft		Green Passing		Green		AIS Green CAN
	8 - 9		8 - 9 ft		Red Passing		Red		AIS Red NUN
	9 - 9.5		9 - 10 ft		Green Crossing		Red		Green CAN
	9.5 - 10		10 - 12 ft		Red Crossing		Junction		Red NUN
	10 - 12		River Mile						
	12 - 14		Sailing Line						
	14 - 16		BSNP Structure						
	> 16		Levee						

Buoy

	AIS Green CAN
	AIS Red NUN
	Green CAN
	Red NUN

Scale: 0 312.5 625 937.5 1,250 2,500 Feet

NOTES:
Horizontal Coordinate System: World Geodetic System of 1984 (WGS84), projected to the Universal Transverse Mercator (UTM) Zone 15 North. Distance units in U.S. Survey Feet.
Vertical Datum: Soundings are shown in feet and indicated depths are referenced to water surface at time of collection.
The information depicted on this map represents the results of a survey conducted on the date indicated and can only be considered to represent the general condition existing at that time.
The location of navigation aids are based on and provided by the U.S. Coast Guard.

Sheet Number
16 of 46